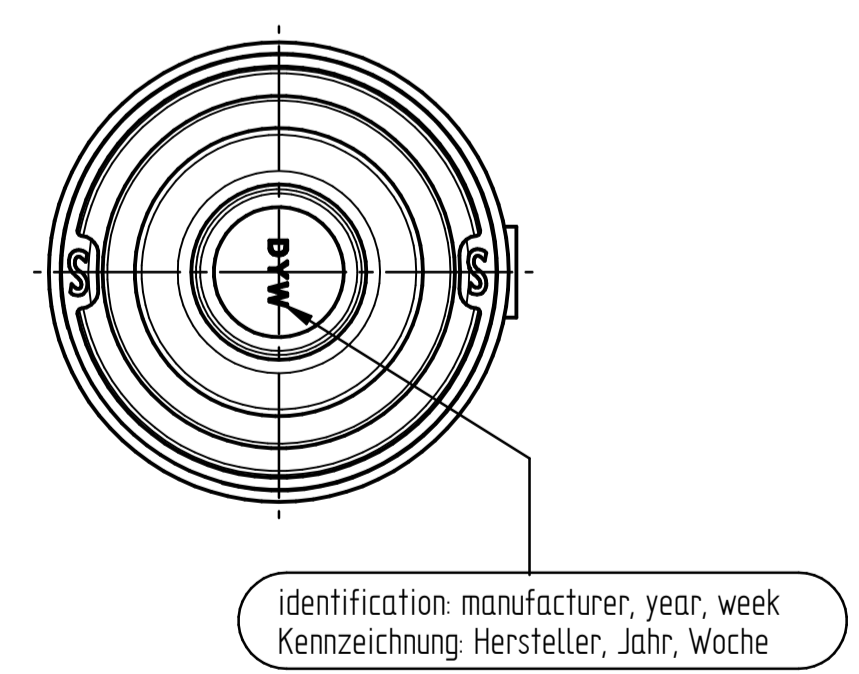
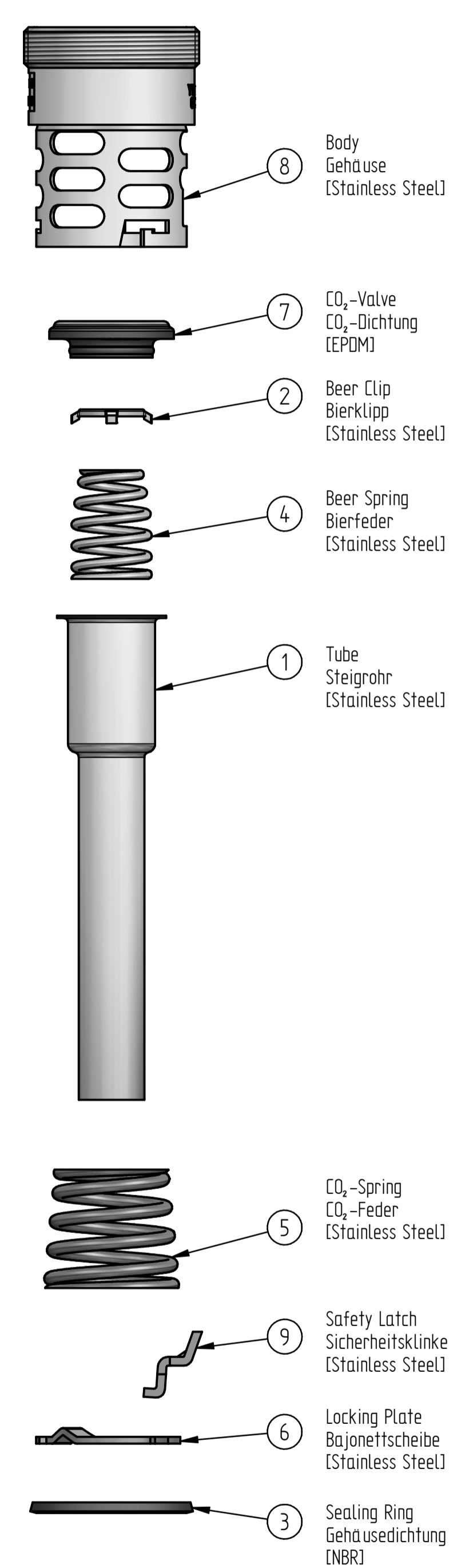
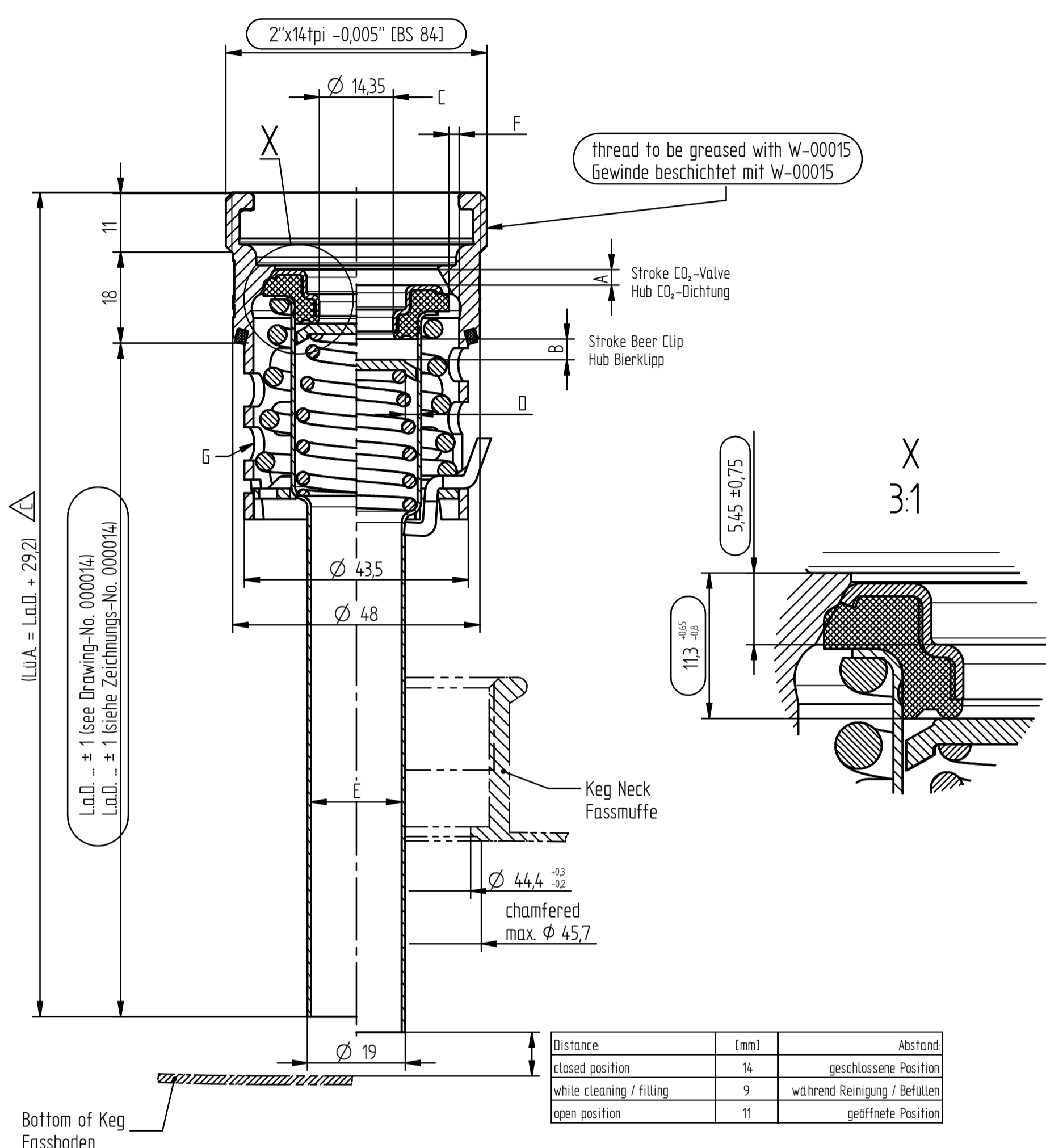


| EN | DE |
|---|---|
| Product Information | Produktinformationen |
| according to DIN 6650, DIN 3542 and FDA regulations | Produkt nach DIN 6650, DIN 3542 und FDA-Bestimmungen |
| gasight | gasdicht |
| for specific length calculation keg drawing or H3-dimension is needed according to DIN 6647 | Für konkrete Längenberechnung wird die Keg-Zeichnung oder das H3-Maß nach DIN 6647 benötigt |
| mounting torque: 80±5 Nm | Anzugsdrehmoment: 80±5 Nm |
| temperature resistance short-time 135°C | Temperaturbeständigkeit kurzfristig 135°C |
| for more information www.dispensegroup.com | für mehr Informationen www.dispensegroup.com |

| EN | DE | open Position | while Cleaning / Filling | Hub und Öffnungsquerschnitte | offene Position | während Reinigung / Befüllen |
|-----|---|---------------|--------------------------|--|-----------------|------------------------------|
| I | CO ₂ valve + tube part 7 + part 1 - part 8 | A | 3 mm | CO ₂ -Dichtung + Steigrohr Pos. 7 + Pos. 1 - Pos. 8 | A | 3 mm |
| | beer clip part 2 - part 7 | B | 4 mm | Bierklipp Pos. 2 - Pos. 7 | B | 4 mm |
| II | through the CO ₂ -valve part 7 | C | 160 mm ² | innerhalb der CO ₂ -Dichtung Pos. 7 | C | 160 mm ² |
| | through inner tube part 2 - part 1 | D | 125 mm ² | innerhalb des Steigrohres Pos. 2 - Pos. 1 | D | 125 mm ² |
| | through inner tube Ø17,6 part 1 | E | 240 mm ² | innerhalb des Steigrohres Ø17,6 Pos. 1 | E | 240 mm ² |
| III | through outer tube part 8 - part 7 | F | 240 mm ² | außerhalb des Steigrohres Pos. 8 - Pos. 7 | F | 240 mm ² |
| | in part 8 | G | 1660 mm ² | in Pos. 8 | G | 1660 mm ² |



| Pos. | Quantity | Art.-No. | Title |
|------|----------|----------|--------------------|
| 1 | 1 | 000033 | Master Down Tube S |
| 2 | 1 | 026237.2 | Beer Valve |
| 3 | 1 | 026363.7 | Sealing Ring |
| 4 | 1 | 026364.8 | Beer Spring |
| 5 | 1 | 026365.9 | Spring CO2 |
| 6 | 1 | 026367.0 | Locking Plate |
| 7 | 1 | 026692.6 | CO2 Valve Assy |
| 8 | 1 | 610397 | Body W 2"x14tpi |
| 9 | 1 | 611070 | Safety Latch, flat |

weight calculation ± 5% / Gewichtsrechnung ± 5%

$$m [g] = (L. a. D. [mm] - 40) * 0,315 \frac{g}{mm} + 270g$$

| PRODUCT | TOLERANCES DIN ISO 2768-mS ROUGHNESS DIN EN ISO 1302 EDGES DIN EN ISO 13715 | LAST CHANGE | SCALE 1:21 (1:12,5; 3:1) | WEIGHT VOLUME |
|-------------|--|---|-------------------------------------|--------------------|
| | | 1 x Δ | | |
| | | DESIGN DATE NAME | TITLE | |
| | | 11.02.2015 lasko | Master Extractor Tube W SI 2"x14tpi | |
| | | AM 3024 | | |
| | | 201 31.08.2022 kunze | | |
| | | 301 05.07.2022 kunze | | |
| | | FILE NAME: 000024 Master-Drawing ET W SI 2x14tpi.asm/turbidlog DRAWING NAME: 000024 Master-Drawing ET W SI 2x14tpi.dft | PROJ. METHOD | FORMAT |
| | | | A2 | DRAWING NUMBER |
| | | | | 000024 |
| | | | | SHEET |
| | | | | 1 |
| | | | | 1 SHTS. |
| ALTERATIONS | DATE | NAME | AM | PROD. DEV. GERMANY |
| | | | | REPL. BY |

This drawing is the property of Dispense Systems International. The information on it is confidential and must not be copied for any other purpose without the prior written permission of DSI Getränkeautomaten GmbH. If in doubt, please ask. Samples are required after each revision.