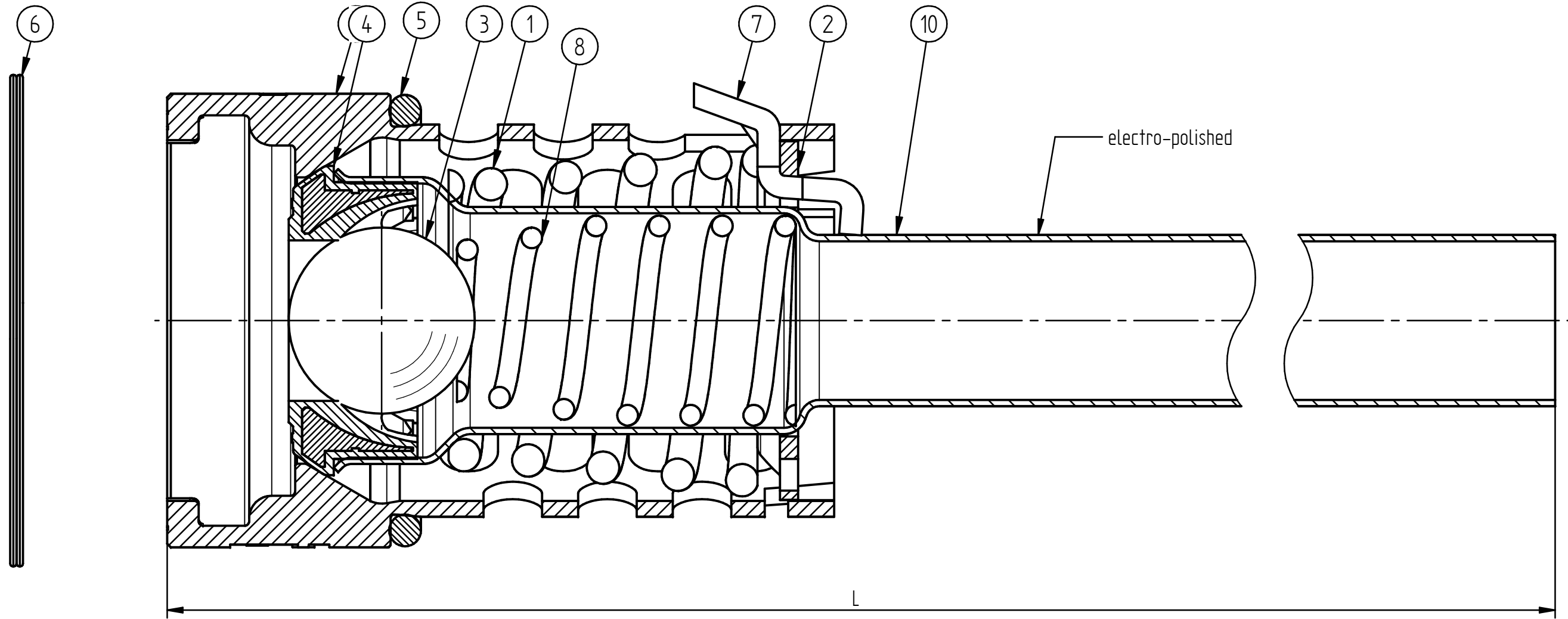
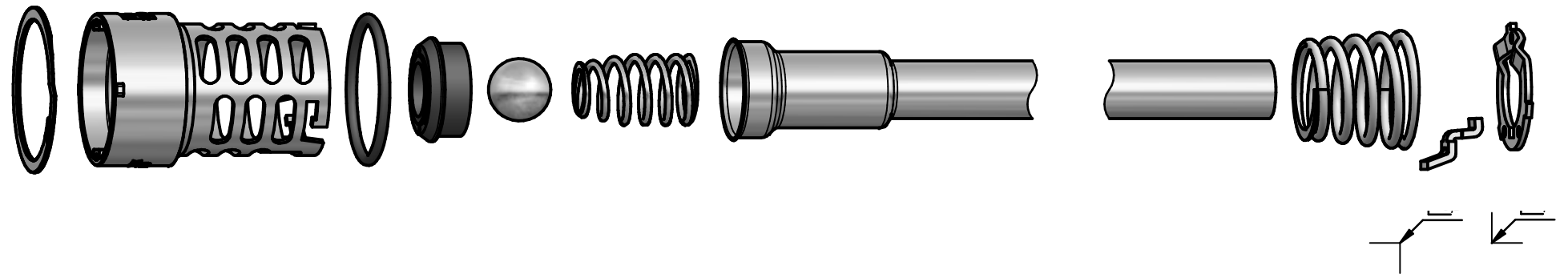


DSI Getränkearmaturen GmbH.
 If in doubt, please ask.
 Samples are required after each revision.

This drawing is the property of Dispense Systems International.
 The information is confidential and should not be copied for
 any other purpose without the prior written permission of



Pos.	Quantity	Art.-No.	Title
1	1	026365.9	Spring CO2
2	1	026367.0	Locking Plate
3	1	026703.6	Ball
4	1	026704.7	CO2 Valve WD
5	1	026708.0	O-Ring 40,87 x 3,53
6	1	026709.1	Retaining Ring
7	1	610463	Safety Latch, flat
8	1	610552	Beer Spring
9	1	610809	Body WDS
10	1	0-610813	Down Tube; L=xxx



PRODUCT		TOLERANCES	LAST CHANGE	SCALE 1:1	WEIGHT
2013-01		DIN ISO 2768-mH			VOLUME
		ROUGHNESS	- X Δ	MATERIAL	
		DIN EN ISO 1302		TITLE	
		EDGES		Extractor Tube WDS; L=xxx	
		DIN EN ISO 13715		FILE NAME: 910434 ET WDS.asm	
			DATE	NAME	DRAWING NAME: 910434 ET WDS.dft
			DESIGN.	26.02.2013	warke
			AM	3609	
			2D	22.02.2019	bentl
			3D	22.02.2019	bentl
		DSI MICRO MATIC		PROJ. METHOD	FORMAT
				A3	DRAWING NUMBER
				910434	SHEET
					1
					1 SHTS.
ALTERATIONS	DATE	NAME	AM	PROD. DEV.	GERMANY
				REPL.	REPL. BY