

# manual

MOUNTING – DISMOUNTING

ASSEMBLING – DISASSEMBLING  
INSTRUCTION

TECHNICAL INFORMATION

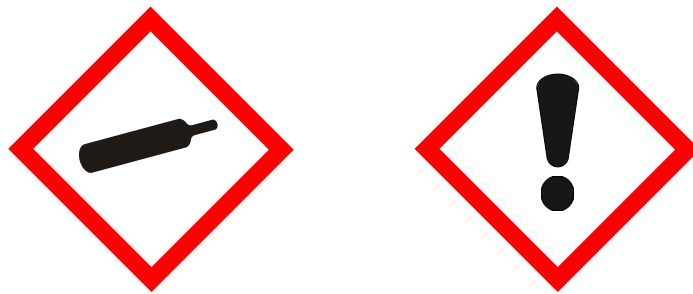
ET-USO  
ET-USI



## SAFETY AND QUALITY

### Health and safety

Incorrect assembly/installation may damage the keg spear and poses the risk that components may occasionally come off during initial pressurization and can cause harm to product and person.



### Quality

Specialised sealing systems made of high-grade materials are in daily utilisation with all our types of extractor tubes. Due to continuous improvement of our technology, we are able to equip all U-type systems with a five-year warranty.

## **LIST OF CONTENTS**

1. Mounting Instruction
2. Dismounting Instruction
3. Disassembling Instruction
4. Assembling Instruction
5. Tool List
6. Technical Information
7. Connections

# **MOUNTING INSTRUCTION**

## EXTRACTOR TUBE ET-USO / ET-USI

### 1. Mounting Instruction

ET-USO



ET-USI



## MOUNTING INSTRUCTION

### EXTRACTOR TUBE ET-USO / ET-USI

Fig. 01



1. Moisten the extractor tube with water.

Fig. 02



2. Check the keg neck is clean. Clean the keg neck from any contaminations.

Fig. 03



3. Check the sealing ring is not damaged and is positioned correctly.

#### 3.1 ET-USO

Pull up the sealing ring to the support ring.

## MOUNTING INSTRUCTION

### EXTRACTOR TUBE ET-USO / ET-USI

Fig. 04



4. Check if lock/safety is O.K. Insert the extractor tube straight.

Fig. 05



5. Push in the spear by hand. The safety latch will recess and click back after it has passed the keg neck.

Fig. 06



6. Tighten the extractor tube (rotate it clockwise) e.g. with the DSI screw-in/screw-out tool and torque-wrench.  
ET-USO: The mounting torque must be  $65 + 5\text{Nm}$ .  
ET-USI: The mounting torque must be  $80 + 5\text{Nm}$ .

## **MOUNTING INSTRUCTION**

### EXTRACTOR TUBE ET-USO / ET-USI

Fig. 07



7. Remove the screw-in/screw-out tool. The  
keg is ready for use now.

## **DISMOUNTING INSTRUCTION**

### EXTRACTOR TUBE ET-USO / ET-USI

## 2. Dismounting Instruction

ET-USO



ET-USI





## DISMOUNTING INSTRUCTION

### EXTRACTOR TUBE ET-USO / ET-USI

Fig. 8



1. Decompress the keg, e.g. by means of the DSI decompression and removal tool.

Fig. 9



2. Unscrew the extractor tube (rotate it counter-clockwise) with the DSI screw-in/screw-out tool.

Fig. 10



3. Connect the Removal Tool like a normal dispense head and press down the handle till it clicks. The safety latch will recess.

## DISMOUNTING INSTRUCTION

### EXTRACTOR TUBE ET-USO / ET-USI

Fig. 11



4. Take out the spear and disconnect the removal tool.

## **DISMOUNTING INSTRUCTION**

### EXTRACTOR TUBE ET-USO / ET-USI

#### 3. Disassembling instruction

ET-USO

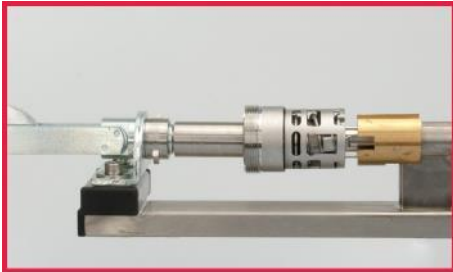


ET-USI

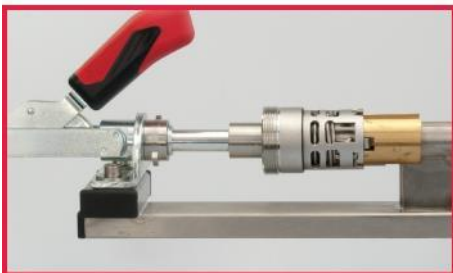


## DISMOUNTING INSTRUCTION

### EXTRACTOR TUBE ET-USO / ET-USI



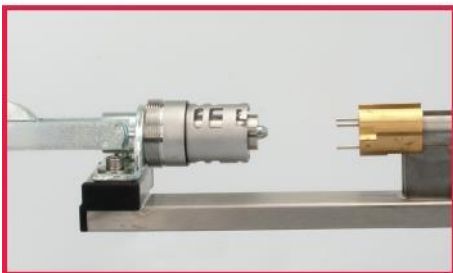
1. Put the extractor tube in the tool. Make sure that the three pins of the tool fit into the three holes in the bottom of the extractor tube.



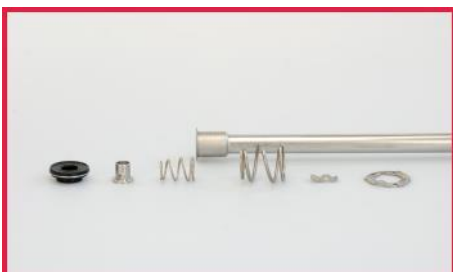
2. Pull the handle forward to compress the spring. Push the safety latch slightly inwards. Pull the body downward and turn it anti-clockwise until it is unlocked.



3. Move the body upwards and connect it to the tool by turning the body 90°.



4. Push the handle backward. Take the subassembly out. Take the body off.



5. Take off the remaining parts. The extractor tube is disassembled.

# ASSEMBLING INSTRUCTION

## EXTRACTOR TUBE ET-USO / ET-USI

### 4. Assembling instruction

ET-USO

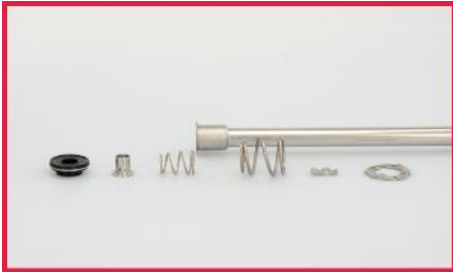


ET-USI

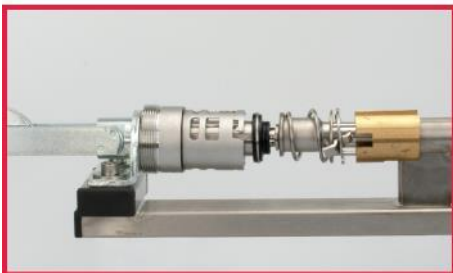


## ASSEMBLING INSTRUCTION

### EXTRACTOR TUBE ET-USO / ET-USI



1. Replace the sealing ring on the body and the main seal. Assemble all parts.



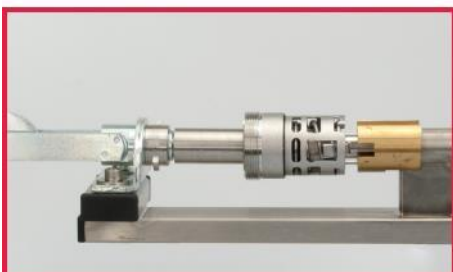
2. Connect the body to the Assembling Tool. Put the subassy in the Tool. Push the safety latch slightly inwards. Make sure the tool's three pins fit into the holes in the bottom plate.



3. Pull the handle forward to compress the spring.



4. Pull the body downwards and turn it clockwise until it is locked to the Extractor Tube Plate. Make sure that the safety latch sticks through the big opening in the body.



5. Push the handle backward in order to tension the spring and take out the extractor tube. Please check the correct positions of the seals and the safety latch.

## TOOLS

### EXTRACTOR TUBE ET-USO / ET-USI

#### 5. Tool List

ET-USO



ET-USI



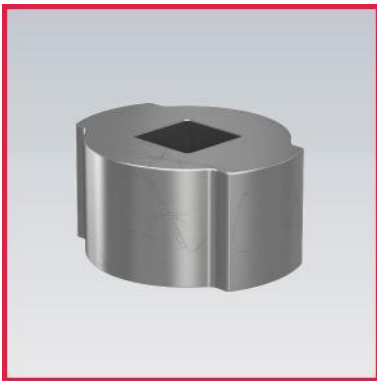
## TOOLS

### EXTRACTOR TUBE ET-USO / ET-USI



1. Removal- and decompression tool:

part number: 027985.1



2. Screw-in/screw-out tool:

part number: 611062



3. Assembling/Disassembling tool:

part number: 910464



## TOOLS

### EXTRACTOR TUBE ET-USO / ET-USI



4. Assembling tool:

part number: 611899

## TECHNICAL INFORMATION

### EXTRACTOR TUBE ET-USO / ET-USI

#### 6. Technical Information

ET-USO



ET-USI







## CONNECTIONS

### EXTRACTOR TUBE ET-USO / ET-USI

#### 7. Connections

ET-USO



ET-USI





## **DSI Micro Matic GmbH**

Oberster Kamp 20  
59069 Hamm  
Germany  
Telefon: +49 (0) 23 85 772 100  
Fax: +49 (0) 23 85 772 249  
dsi-sales@micro-matic.com  
dsi.micro-matic.com

## **DSI SERVICE – TEAM**

### **SALES AND CUSTOMER SERVICE:**

Iryna Matyak  
Eastern Europe, UK & Ireland  
Telefon: +49 (0) 23 85 772 216  
E-Mail: iryna.matyak@micro-matic.com

Debora Salvador  
Western Europe & North-/ South-America  
Telefon: +49 (0) 23 85 772 212  
E-Mail: debora.salvador@micro-matic.com

Katja Spanke  
Western Europe, Australia & Asia  
Telefon: +49 (0) 23 85 772 215  
E-Mail: katja.spanke@micro-matic.com

### **SALES FIELD SERVICE:**

Rafael Kurzawa  
D.A.CH.  
Telefon: +49 2385 772 218  
Mobil: +49 162 2892386  
E-Mail: rafael.kurzawa@micro-matic.com