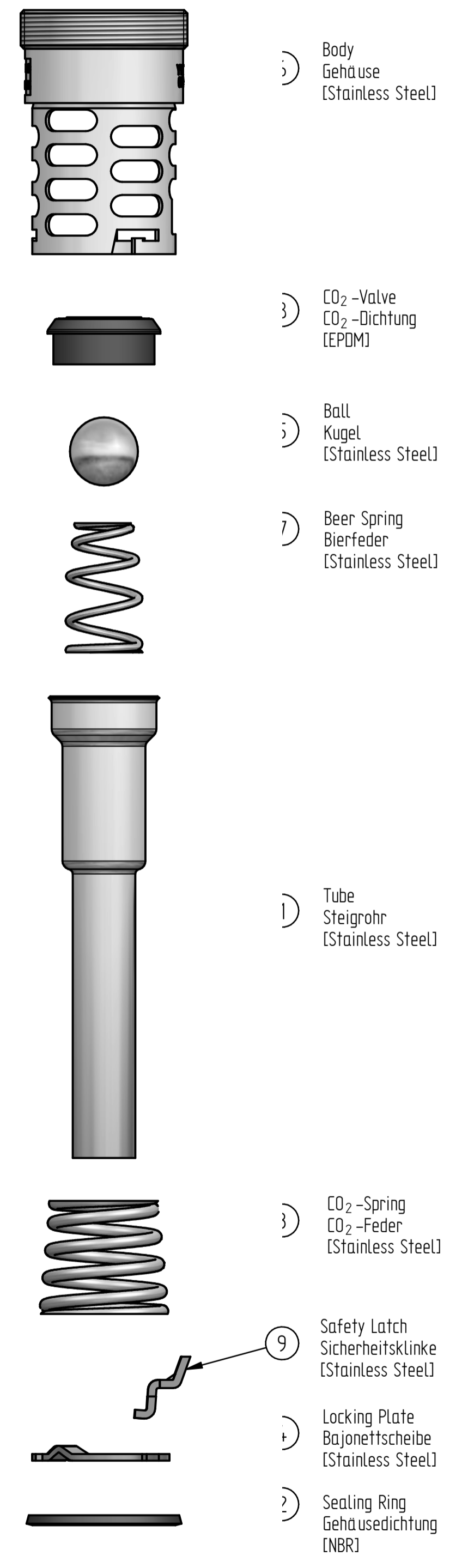
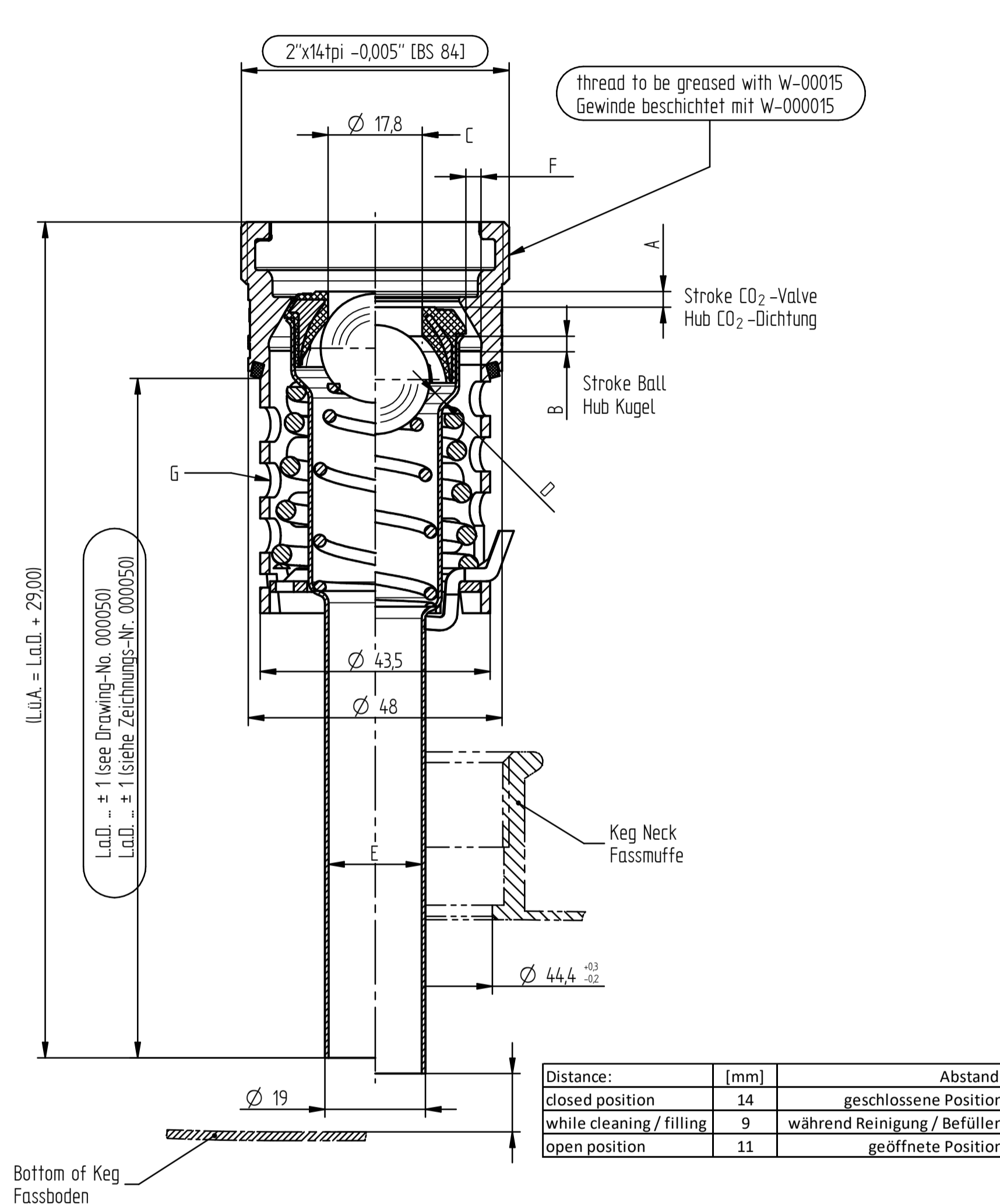


EN	DE
Product Information	Produktinformationen
according to DIN 6650, DIN 3542 and FDA regulations	Produkt nach DIN 6650, DIN 3542 und FDA Bestimmungen
gastight	gasdicht
for specific length calculation keg drawing or H3-dimension is needed according to DIN 6647	Für konkrete Längenberechnung wird die Keg-Zeichnung oder das H3-Maß nach DIN 6647 benötigt
mounting torque: 80±5 Nm	Anzugsdrehmoment: 80±5 Nm
temperature resistance short-time 160°C	Temperaturbeständigkeit kurzfristig 160°C
for more information www.dispensegroup.com	für mehr Informationen www.dispensegroup.com

EN	DE	open Position	while Cleaning / Filling	Hub und Öffnungsquerschnitte	offene Position	während Reinigung / Befüllen	
I	CO ₂ valve + tube part 8 + part 1 - part 6	A	3 mm	4-6 mm CO ₂ Dichtung + Steigrohr Pos. 8 + Pos. 1 - Pos. 6	A	3 mm	4-6 mm
	ball part 5 - part 8	B	4 mm	Kugel Pos. 5 - Pos. 8	B	4 mm	6,5-8 mm
	inside the seal part 8	C	250 mm ² innerhalb der Dichtung Pos. 8		C	250 mm ²	
II	through inner tube part 5 - part 1	D	175 mm ²	115~130 mm ² innerhalb des Steigrohres Pos. 5 - Pos. 1	D	175 mm ²	115~ 130 mm ²
	through inner tube ϕ 17,6 part 1	E	240 mm ² innerhalb des Steigrohres ϕ 17,6 Pos. 1		E	240 mm ²	
III	through outer tube part 6 - part 8	F	330 mm ² außerhalb des Steigrohres Pos. 6 - Pos. 8		F	330 mm ²	
	in part 6	G	2340 mm ² in Pos. 6		G	2340 mm ²	



weight calculation ± 5% / Gewichtsberechnung ± 5%

$$m [g] = (L.a.d. [mm] - 45) * 0,315 \frac{g}{mm} + 330g$$

Pos.	Quantity	Art.-No.	Title
1	1	000018	Down Tube WD Efes
2	1	026363.7	Sealing Ring
3	1	026365.9	Spring CO2
4	1	026367.0	Locking Plate
5	1	026703.6	Ball
6	1	028303.0	Body W 2"x14tpi
7	1	611056	Beer Spring
8	1	611060	CO2 Valve WD Blow-Off
9	1	611070	Safety Latch, flat

PRODUCT		TOLERANCES		LAST CHANGE		SCALE		WEIGHT	
W DSI - Blow Off		DIN ISO 2768-mS		AM		1:2,1 (1:1,25)		VOLUME	
		ROUGHERNESS		- X Δ		MATERIAL			
		DIN EN ISO 1302							
		EDGES							
		DIN EN ISO 13715							
		DATE		NAME		TITLE			
		09.04.2015		lasko		Master Extractor Tube W DSI			
		AM		3024					
		DATE		NAME					
		16.04.2020		kunze					
		DATE		NAME					
		31.03.2022		suel					
D new logo DSI		16.04.2020		Kunze		4427		FILE NAME: 000040_Masterdrawing ET W DSI_befüllg.asm	
C 611056 was 611052		18.12.2017		Kunze		3919		DRAWING NAME: 000040_Masterdrawing ET W DSI.dwg	
B 611060 was 026704.7		15.05.2017		Kunze		3786		PROJ. METHOD	
A corrected rate of flow, Pos. 5 was Pos. 6		13.09.2016		Lasko		3593		FORMAT	
								DRAWING NUMBER	
								A2	
								000040	
								SHEET	
								1	
								1 SHTS	
ALTERATIONS		DATE		NAME		AM		PROD. DEV. GERMANY	
								REPL. BY	

This drawing is the property of Dispense Systems International. The information on it is confidential and must not be copied for any other purpose without the prior written permission of DSI Getränkeautomaten GmbH. If in doubt, please ask. Samples are required after each revision.