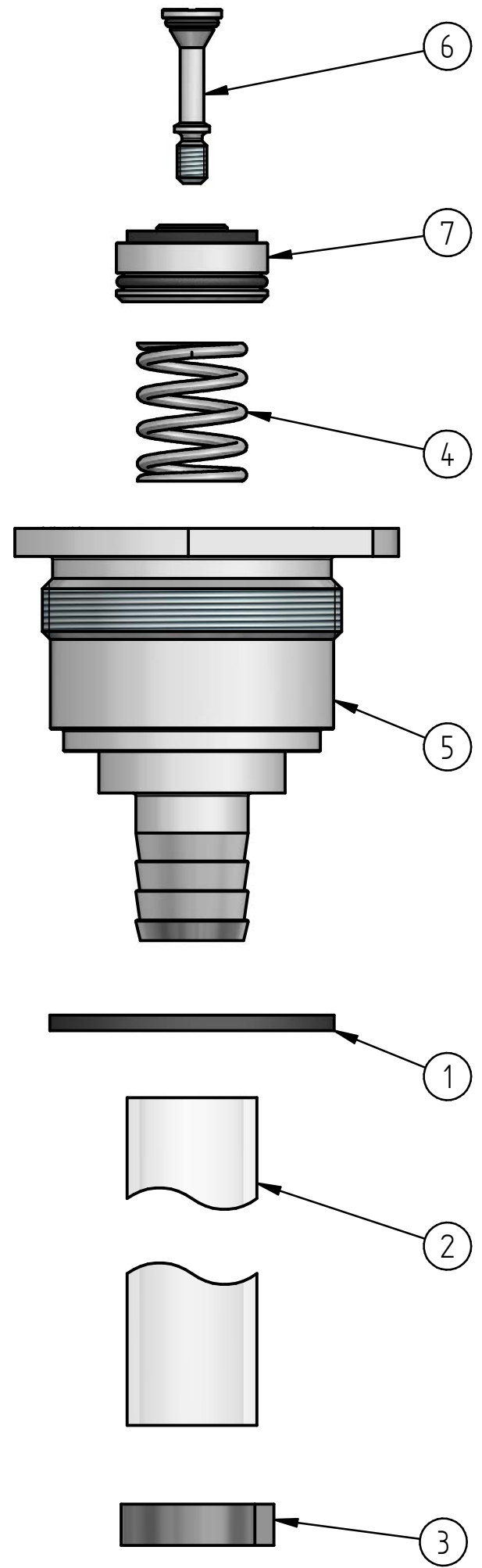
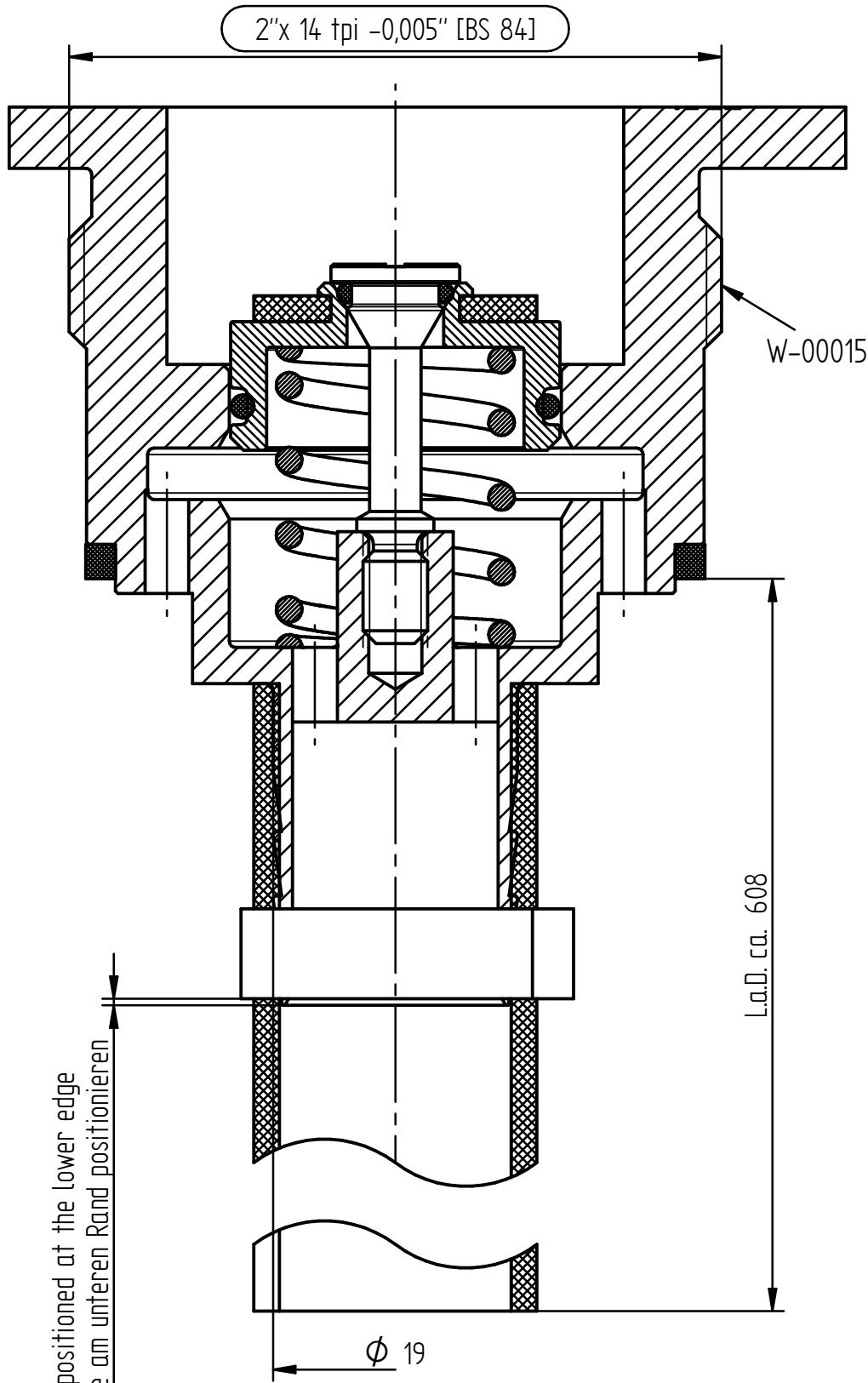


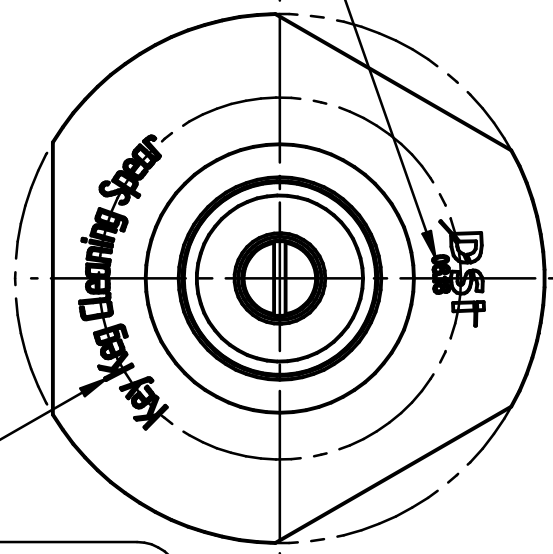
DSI Getränkearmaturen GmbH.
 If in doubt, please ask.
 Samples are required after each revision.

This drawing is the property of Dispense Systems International.
 The information is confidential and should not be copied for
 any other purpose without the prior written permission of



1-ear-clamp positioned at the lower edge
 1-Ohr-Klemme am unteren Rand positionieren

month and year of assembly
 Monat und Jahr der Montage



etch on top W-01100
 Auf Oberfläche ätzen mit W-01100

Pos.	Quantity	Art.-No.	Title
1	1	025130.6	Sealing Ring
2	1	611462	Tube (PVC) ϕ ID=18, ϕ OD=22
3	1	611464	1-ear-clamp
4	1	611465	Spring
5	1	611466	Body 2"x14 tpi
6	1	811093	Screw M5
7	1	811094	Valve Assembly

Pos. 7 (O-Ring): greased with 025935.8
 thread Pos. 5: greased with W-00015
 Pos. 6: mounted with torque 3+1 Nm

Pos. 7 (O-Ring): gefettet mit 025935.8
 Gewinde Pos. 5: beschichtet mit W-00015
 Pos. 6: Anzugsdrehmoment 3+1 Nm

PRODUCT				TOLERANCES		LAST CHANGE		SCALE 2:1 (1:1)		WEIGHT VOLUME	
Cleaning Keg				DIN ISO 2768-mH		2 x Δ		MATERIAL			
				ROUGHNESS		DATE		NAME		TITLE	
				DIN EN ISO 1302		21.08.2017		lasko		Cleaning Extractor KK	
				EDGES		ÄM		3866		FILE NAME: 910687_Extractor Tube KeyKeg - Cleaning Keg.asm	
				DIN EN ISO 13715		12.12.2019		suelt		DRAWING NUMBER	
D 1-ear-clamp was Hose clamp				11.12.2019		suelt		4366		910687	
C added: 025130.6				23.10.2018		Kunze		4137		SHEET	
B added: top view with etching template, L.a.D. ca. 608				30.08.2018		Lebrazi		4115		1	
A added: text (clamp position, W-00015)				17.08.2018		Kunze		4108		1 SHTS.	
Δ ALTERATIONS				DATE		NAME		ÄM		REPL. BY -	
PROD. DEV.				GERMANY		REPL. -		REPL. BY -			

