

## Handling

- Standard pressures, cleaning and usage proven and tested
- Easy and fast assembly and disassembly for cleaning and maintenance, without tools
- DSI Standard spare parts / sealings used
- Spring loaded handle possible for safe repositioning and closed Gas

## Facts

- Glass Fiber reinforced Plastic „PA 66 - GF30“
- Food compliance acc. FDA & EU1935
- 100% produced in Germany = low footprint
- Safety / decompression valve option at Body
- Gas connector possible to switch by 180°



# Composite Coupler

## Versions

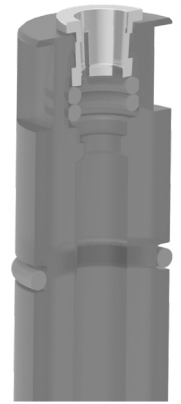
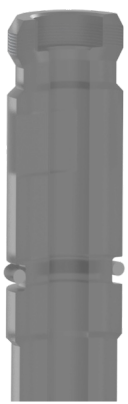
- S- & D-Type as well as A- & M-Type
- Connections at Gas & Beer: G1/2, G5/8 + PushFit 5/16" & 3/8"
- Different probe designs possible
- A- & M-Type with Combi CO2-Seal

Ball & Captive  
G 5/8 + G 1/2

Shutoff-Valve  
G 5/8 + G 1/2

3/8" PushFit

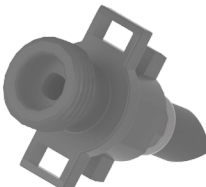
5/16" PushFit



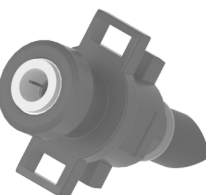
G 5/8 thread



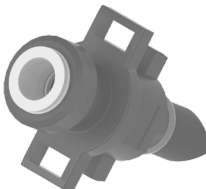
G 1/2 thread



3/8" PushFit



5/16" PushFit



S-Type / D-Type



S-Type



D-Type



A-Type / M-Type



A-Type



M-Type

