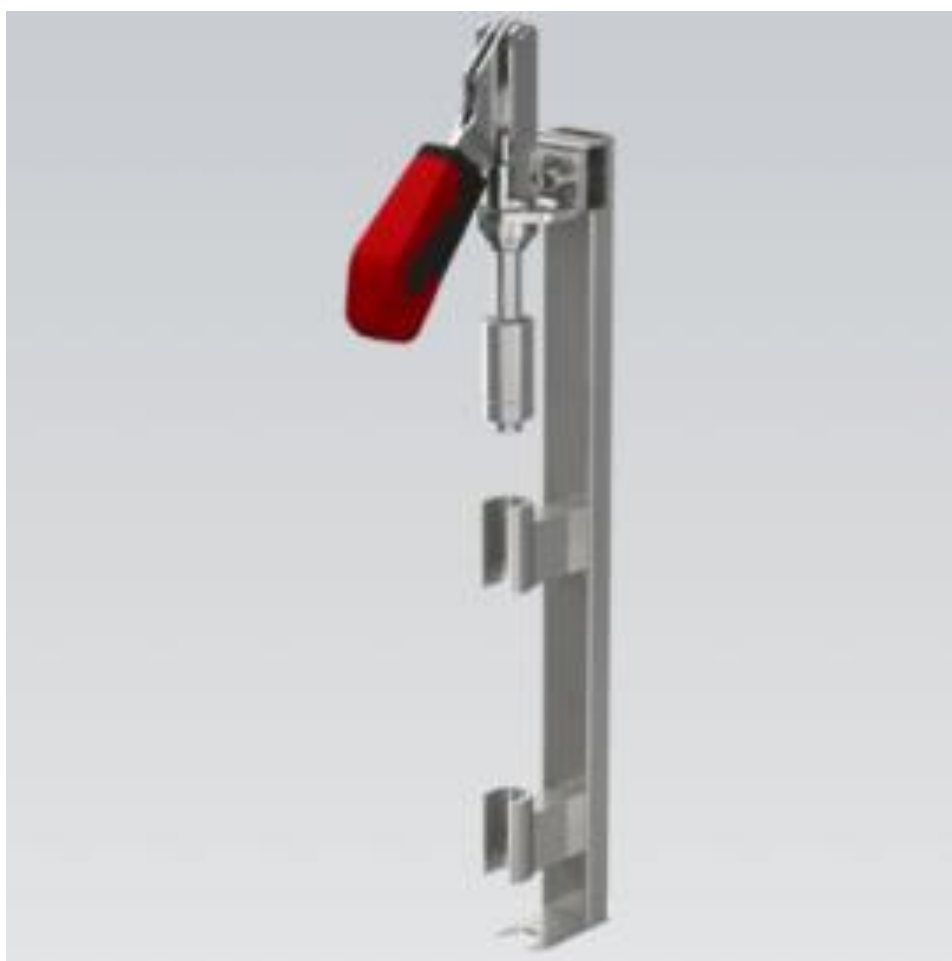


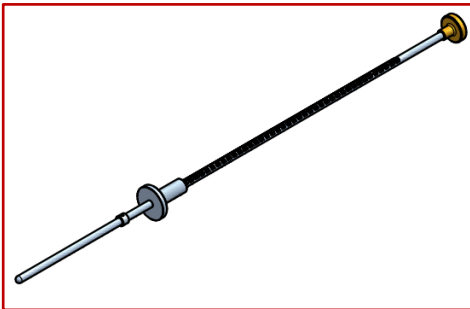
EXTRACTOR TUBES / SPEARS



Content:

Valid for all systems -----	Page: 3
A-Type -----	Page: 4 – 6
G-Type -----	Page: 7 – 8
M-Type -----	Page: 9 – 10
S-Type -----	Page: 11 – 14
D-Type -----	Page: 15 – 19
U-Type -----	Page: 20 – 22
L-Type -----	Page: 23
Tool Overview -----	Page: 24 – 26

Valid for all Systems



H3 measuring tool for Kegs
910648

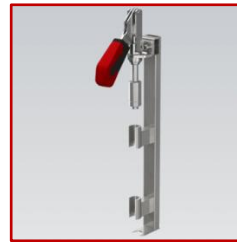
A-Type, threaded version



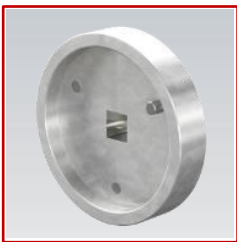
AC S : A-Type, safety
AC FS : A-Type, fix-safety



Installation and
removal tool
910550



Assembly/disas-
sembly tool
910555



Turn-in and
turn-out plate
550426.8



sleeve for sealing
ring; assembled
spear incl. fixed
safety
611326



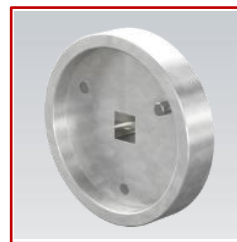
Venting head
811225



sleeve for
sealing ring
611899



Assembly/dis-
assembly
sleeve for
safety latch
910712



Turn-in and
turn-out plate;
for Ø85 mm
flange
910805



Torque
wrench
910562



Torque
wrench,
digital
910749

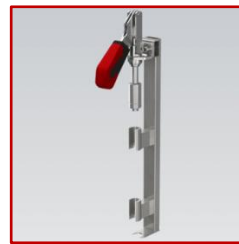
A-Type,
non-threaded



AC B : A-Type, BS Neck



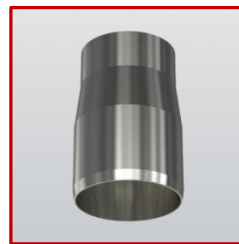
Venting head
811225



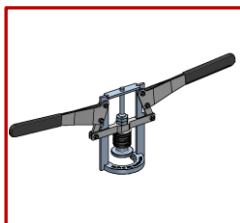
Assembly/disas
sembly tool
910555



Dismantling
set
026815.8 +
026816.9



sleeve for
sealing ring
611899



Mounting
Tool
910552

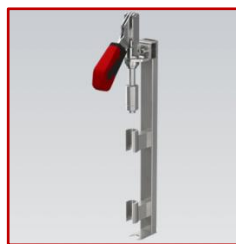
A-Type, non-threaded



AOS : A-Type, SOS Neck



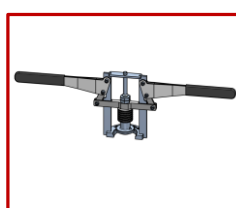
Venting head
811225



Assembly/disassembly tool
910555



sleeve for
sealing ring
611899



Mounting
tool
910392



Demounting
tool
910519

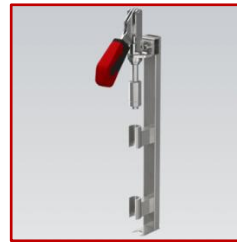
G-Type,
threaded
version



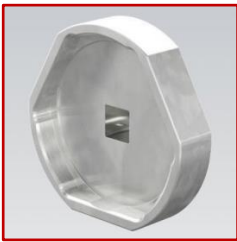
GR S: G-Type, safety
GR FS : G-Type, fix-safety



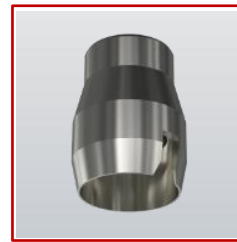
Installation and
removal tool
910550



Assembly/disas-
sembly tool
910555



Turn-in and
turn-out plate
550425.7



sleeve for sealing
ring; assembled
spear incl. fixed
safety
611326



Venting head
811226



sleeve for
sealing ring
611899



Assembly/dis
assembly
sleeve for
safety latch
910712



Torque
wrench,
digital
910749



Torque
wrench
910562

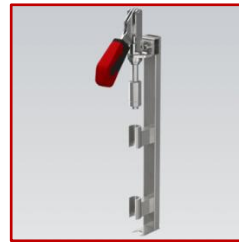
G-Type, non-threaded



GR B : G-Type, BS Neck



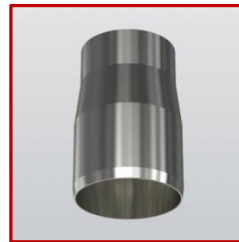
Venting head
811226



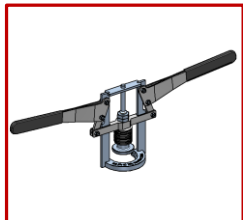
Assembly/disassembly tool
910555



Dismantling set
026815 +
026816



sleeve for sealing ring
611899



Mounting Tool
910552

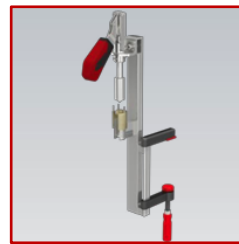
M-Type,
threaded
version



CSI: M-Type, safety



Turn-in and
turn-out plate
550426.8



Assembly/disas-
sembly tool
910554



Removal and
decompressi-
on tool
550439.1



CO2 Valve
removal (M-
Type)
910611



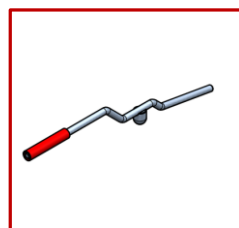
sleeve for
sealing ring
611899



Torque
wrench,
digital
910749



Torque
wrench
910562

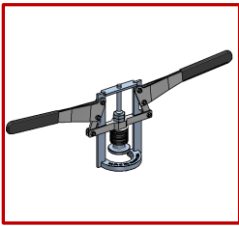


Decompress-
ion lever
910570

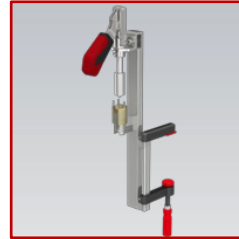
M-Type, non-threaded



C B : M-Type, BS Neck



Mounting
Tool
910552



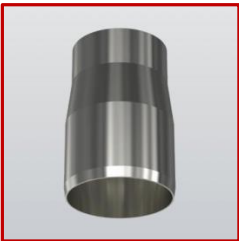
Assembly/disas
sembly tool
910554



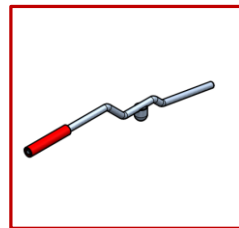
Removal and
decompressi
on tool
550439.1



CO2 Valve
removal (M-
Type)
910611



sleeve for
sealing ring
611899



Decompress-
ion lever
910570

S-Type,
threaded
Version



W SI : S-Type, safety

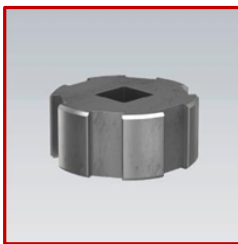
W SID : S-Type, safety, David



Removal and
decompression tool
026578.2



Assembly/dis
assembly tool
910545



Turn-in and
turn-out
plate
025521.1



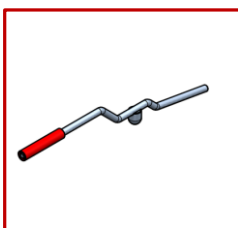
Assembly/dis
assembly tool
3 Lugs
026790.5



Torque
wrench
910562



sleeve for
sealing ring
611899



Decompression
lever
910570



Torque
wrench,
digital
910749

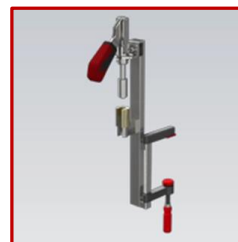
S-Type,
non-threaded
Version



W DE : S-Type, Drop-In Neck



decompression tool
026578.2



Assembly/disassembly tool
910551



Mounting-/Demounting tool
910544



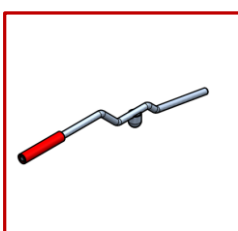
sleeve for sealing ring
611899



Circlip removal
027468.1



Removal tool
910547



Decompression lever
910570

S-Type,
non-threaded
Version



WB: S-Type, SOS Neck



decompression tool
026578.2



Assembly/disassembly tool
WB
910549



Mounting-/Demounting tool
910544



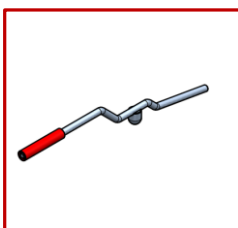
sleeve for sealing ring
611899



Circlip removal
910546



Removal tool
WB
910548



Decompression lever
910570

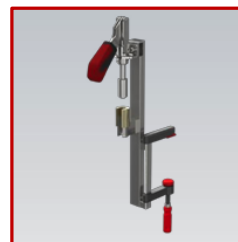
S-Type,
non-threaded
Version



W BT : S-Type, BS Neck



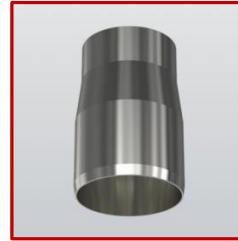
decompression tool
026578.2



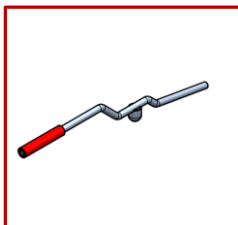
Assembly/disassembly tool
WB
910549



Dismantling set
026815.8 +
026816.9



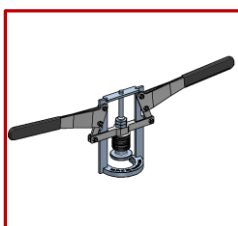
sleeve for sealing ring
611899



Decompression lever
910570



Removal tool
WB
910548



Mounting Tool
910552

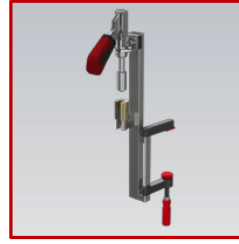
D-Type, non-threaded Version



WD : D-Type, Drop-In Neck



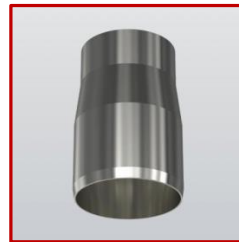
decompression tool -WD
027987.3



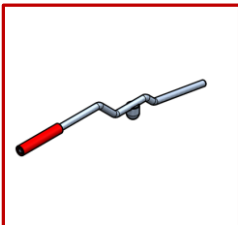
Assembly/dis
assembly tool
WD
910551



Circlip
removal
027468.1



sleeve for
sealing ring
611899



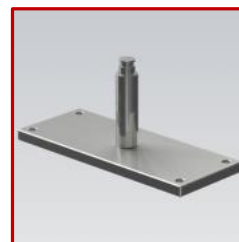
Decompression
lever
910570



Removal tool
WD
910547



Mounting-
/Demounting
tool
910544



CO2 Valve
removal (D-
Type)
910610

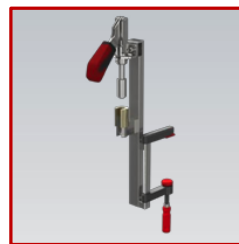
D-Type, non-threaded Version



W BD : D-Type, SOS Neck



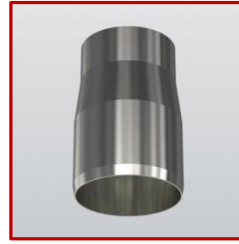
decompression tool -WD
027987.3



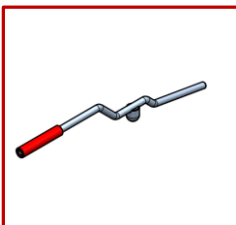
Assembly/dis
assembly tool
WD
910551



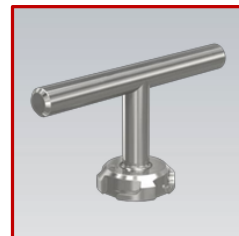
Circlip
removal
910546



sleeve for
sealing ring
611899



Decompression
lever
910570



Removal tool
WB
910548



Mounting-
/Demounting
tool
910544



CO2 Valve
removal (D-
Type)
910610

D-Type, non-threaded Version



W BTD : D-Type, BS Neck



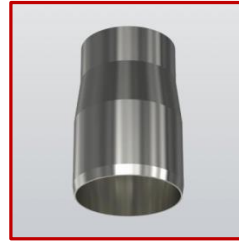
decompression tool -WD
027987.3



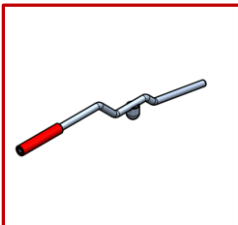
Assembly/disassembly tool
WD
910551



Dismantling set
026815.8 +
026816.9



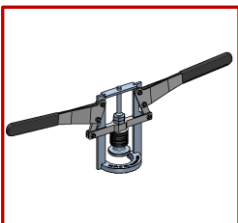
sleeve for sealing ring
611899



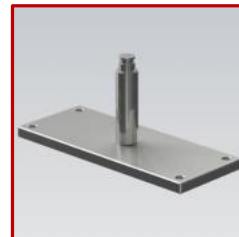
Decompression lever
910570



Removal tool
WB
910548



Mounting Tool
910552



CO2 Valve removal (D-Type)
910610

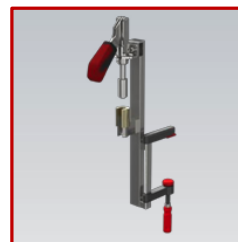
D-Type,
threaded
Version



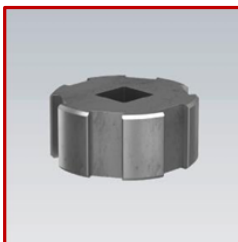
W DSI : D-Type, 2" x 14 tpi,
safety



decompression tool -WD
027987.3



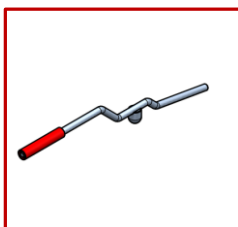
Assembly/dis
assembly tool
WDSI
910553



Turn-in and
turn-out
plate
025521.1



sleeve for
sealing ring
611899



Decompression
lever
910570



CO2 Valve
removal (D-
Type)
910610



Torque
wrench
910562



Torque
wrench,
digital
910749

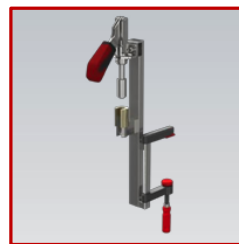
D-Type,
non-threaded
Version



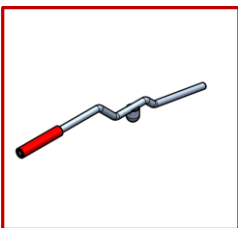
W DS : D-Type, Drop-In Neck,
safety



decompression tool -WD
027987.3



Assembly/dis
assembly tool
WDSI
910553



Decompression lever
910570



sleeve for
sealing ring
611899



Circlip
removal
027468.1



CO2 Valve
removal (D-
Type)
910610



Mounting-
/Demounting
tool
910544



Removal tool
WD
910547

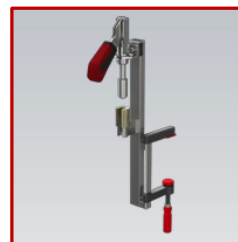
U-Type,
threaded
Version



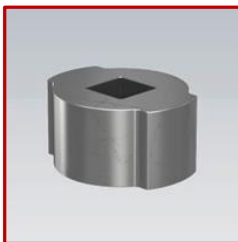
U SI: U-Type, std., safety



Removal and
decompression
tool
027985.1



Assembly/dis
assembly tool
U
910464



Turn-in and
turn-out
plate
611062



sleeve for
sealing ring
611899



Torque
wrench
910562



Torque
wrench,
digital
910749

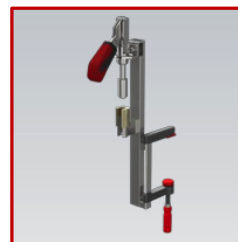
U-Type, threaded Version



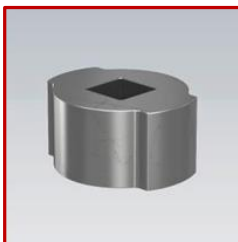
U so: U-Type, Guinness Neck,
O-Ring



Removal and
decompression
tool
027985.1



Assembly/dis
assembly tool
U
910464



Turn-in and
turn-out
plate
611062



sleeve for
sealing ring
611899



Torque
wrench
910562



Torque
wrench,
digital
910749

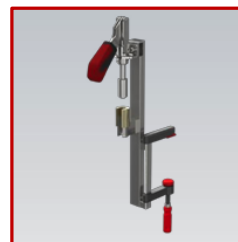
U-Type, non-threaded Version



U DSO: U-Type, Drop-In Neck,
safety



Removal and
decompression
tool
027985.1



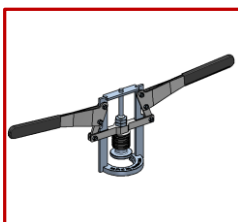
Assembly/dis
assembly tool
U
910464



Circlip
removal
027468.1



sleeve for
sealing ring
611899

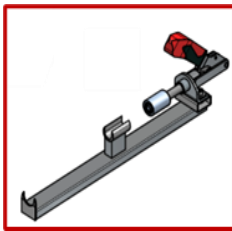


Mounting
Tool - UDSO
910529

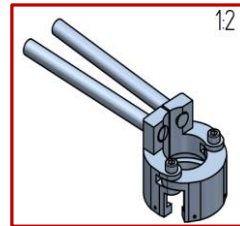
L-Type, non-threaded Version



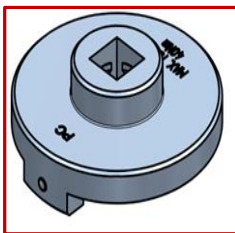
NC: Non-Coke; Flange 60x4,0
PC: Pepsi-Coke; Flange 58x4,5
CC: Coca-Cola; Flange 56x6,0



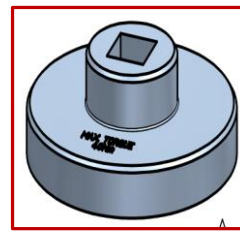
Assembling /
Disassembling
Tool
Valve: L
910637



Circlip
compression
tool
910629



Turn-in and
turn-out
plate
Type: PC
026817.1



Turn-in and
turn-out
plate
Type: NC
026820.2



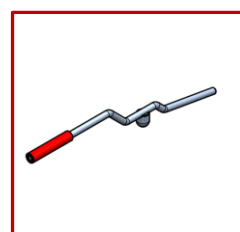
Turn-in and
turn-out
plate
Type: CC
027066.6



Torque
wrench,
digital
910749







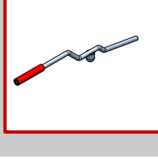



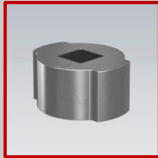
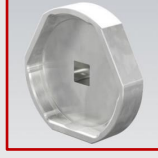


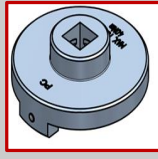
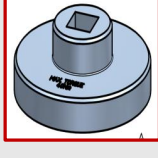


Torque
wrench
910562








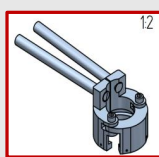


Decompression
lever
910570









Tool Overview

Operation	Item-No.	Picture	Spec.
<u>DECOMPRESSION AND REMOVAL</u>	026578.2		S-Type
	027985.1		U-Type
	027987.3		D-Type
	550439.1		M-Type
	811225		A-Type
	811226		G-Type
	<u>DECOMPRESSION</u>	910570	
<u>SCREW-IN AND UNSCREW</u>	910805		A-Type, Ø85 flange


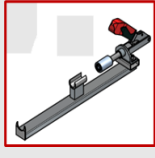


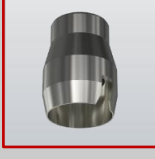


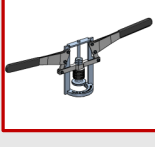
Operation	Item-No.	Picture	Spec.
<u>SCREW-IN AND UNSCREW</u>	611062		U SI U SO
	550425.7		G-Type
	550426.8		A-Type M-Type
	025521.1		W SI W SID W DSI
	026817.1		L PC
	026820.2		L NC
	027066.6		L CC
	910749		all-Type threaded




Tool Overview

Operation	Item-No.	Picture	Spec.
SCREW-IN AND UNSCREW	910562		all-Type threaded
	910550		A-Type G-Type
REMOVAL	026815.8 + 026816.9		AC B GR B W BT W BT D
	910519		A OS
	910546		W B W BD
	910629		L-Type
	027468.1		W D W DE W DS U DSO
	910547		W D W DE W DS

Operation	Item-No.	Picture	Spec.
REMOVAL	910548		W B W BT W BD W BT D
	026790.5		W SI (3-lugs)
SERVICE	910464		U-Type
	910545		W SI W SID
	910549		W B W BT
	910551		W D W DE W BD W BT D
	910553		W DSI W DS
	910554		M-Type

Tool Overview

Operation	Item-No.	Picture	Spec.
SERVICE	910555		all A-Type all G-Type
	910637		L-Type
	910610		D-Type
	910611		M-Type
	611326		AC FS GR FS
	611899		all-Type
	910712		AC S GR S
INSTALLATION	910552		AC B GR B C B W BT W BT D

Operation	Item-No.	Picture	Spec.
INSTALLATION	910526		U DSO
	910544		W D W DE W DS W B W BD
	910392		A OS

DSI Micro Matic GmbH

Oberster Kamp 20

59069 Hamm

Germany

Telefon: +49 (0) 23 85 772 100

Fax: +49 (0) 23 85 772 249

dsi-sales@micro-matic.com

dsi.micro-matic.com